

Chebeague Island Annual Newsletter



2010 - 2011

Chebeague Island Annual Newsletter 2010 - 2011



This issue of the Annual Newsletter is a recording of Chebeague Organizations and Island Life for much of 2010 and through 2011. This is the fourteenth publication produced by the Chebeague Island Historical Society.

We feel that it is an important service to the community to have this on-going record for the continued documentation of Chebeague History.

Beverly Johnson has designed and produced this Annual Newsletter from contributions submitted by island organizations and town committees. Photographs without credits were taken by Beverly and may be found on the chebeague.org website. Thank you to Leila Bisharat for editing this report.

The Chebeague Island Historical Society

Cover Photo by Maggie and Rick Morgan

Table of Contents

Chebeague Island Cemetery	2
Chebeague Island Community Association	4
Chebeague Island Community Sailing School	7
Chebeague Island Council	8
Chebeague Island Fire and Rescue	10
Chebeague Island Grange #576	12
Chebeague Island Hall Community Center	13
Chebeague Island Historical Society	15
Raymond Hamilton	18
Chebeague Island Library	19
Chebeague Needleworkers	21
Chebeague Parents' Association	22
Chebeague Recreation Center	24
Chebeague Transportation Company	27
Chedemption	30
Comprehensive Planning Committee	32
Chebeague Island Planning Board	35
Chebeague and Cumberland Land Trust	37
Free Concert Fund	40
Island Commons Resource Center	42
Ladies Aid	46
Stephen L. Ross Scholarship Fund	47
Town of Chebeague Island	50
Recompense Foundation	51
Chebeague Island School	52
United Methodist Church	56
Whalers	58
Great Chebeague Golf Club	60
Great Chebeague Tennis Club	62
Casco Bay Lines	63
Chebeague Yacht Club	64
Little Chebeague Stewardship Project	66
Chebeague Census and Vital Records	68
Chebeague Boards and Committees	71
Town Departments and Employees	72



The Chebeague Cemetery



The Cemetery is owned by the Town of Chebeague Island. The Selectmen appoint the Cemetery Committee. Cemetery income and expenditures are handled by the Town, which provides a budget for running the Cemetery. In addition, the Cemetery has an independent “perpetual care fund”, created from proceeds from sales of cemetery lots. The interest from this fund is used for maintenance, as is income from burial fees.

The Cemetery Committee has a number of new members who are carrying on the work begun by the initial Cemetery Committee: adopting the rules and regulations they developed, and continuing to work on record keeping. One of the record-keeping issues is that the Cemetery has no unified map that can be used as a starting place for a database for records about ownership of lots and who is buried where. So the Committee is hiring a Geographic Information Systems expert, Erin Quigley, to develop such a map and the framework for the data base. It will then be the responsibility of the Committee, and anyone else who wants to help, to enter all the data that Dick and Dianne have inherited from past Cemetery Superintendents and that they have amassed during their tenure.

Besides work on the Cemetery records, this past year has brought some much needed repairs to the Cemetery’s basic fabric. A new floor was installed in the Hearse House. A new roof and painting are still to come. The hearse itself was cleaned by Milo Matrazzo and secured from the weather.

The Committee is looking for ways to increase maintenance and beautification of the Cemetery. We hope this can include a systematic program of cleaning and repair of gravestones. An old sign for the Cemetery, that had been in

storage in the back of the Cemetery garage for more than 50 years, has been put up again. However, we know surprisingly little about how the Cemetery looked in the past. There are reports that there was a wrought iron fence along the road, and the sign may have been part of that, but there are no pictures that we have seen. So if anyone reading this has more information about this, we would greatly appreciate being told.

The Cemetery Committee

Martha Hamilton, Beth Howe, Gail Miller, Joan Robinson, Sylvia Ross

Ex officio members;

Dick and Dianne Calder, superintendents of the Cemetery.

Susan Campbell, Town staff



Krista Hayward photo

Chebeague Island Community Association

The Chebeague Island Community Association’s mission is “to ensure the survival and long-term viability of Great Chebeague Island as a year-round community.” This past year CICA has worked on three kinds of projects: year-round, moderately price housing, energy efficiency and encouraging agriculture on the island.

Energy Efficiency



CICA’s primary effort in the energy field in 2011 was to encourage the Town to adopt a PACE Ordinance so that residents, year-round and summer, can qualify for Energy Maine’s loans to have an energy audit and hire a contractor to make the improvements that the audit identifies to make the house more energy efficient – things like sealing cracks with foam and caulk, installing insulation, installing more efficient windows and doors and upgrading water heaters or heating systems. The loan limit is \$15,000 and the interest rate is 4.99 percent.

The ordinance was adopted at Town Meeting in February 2011. CICA has followed up with an informational meeting and information about the program in the Calendar.

Farming

CICA, the Slow Bell Café and the Island Institute have worked together to encourage the creation of Erin Whetham’s Lone Goat Farm. Erin had a grant from the Island Institute to hire Caroline Summa as an intern for the summer. Anyone driving down North Road could enjoy the orderly rows of vegetables and flowers in front of the old Cleaves/KomLosy farmhouse. You could also buy Lone Goat vegetables once a week at the Slow Bell, and enjoy them in the Slow Bell’s meals.

Year-Round Housing

Our major focus this year has been on year-round housing. In February 2010 the Maine State Housing Authority (MSHA) announced tentative guidelines for a \$2 million affordable housing program specifically for unconnected islands which had been shepherded through the State Legislature in 2009



Fall planting of garlic by Erin Whetham

by the Islands Coalition, Hannah Pingree and Libby Mitchell. The state guidelines focused on multi-family rental housing, so CICA asked the Town if it could apply to the State for money to put a manufactured rental duplex on a town-owned parcel of land on School House Road.



*Chebeague students harvesting their lunch vegetables
- Caitlin Gerber photo*

The lot is 3.4 wooded acres. The duplex will sit on a rise in the land, at the end of a curving driveway, about 75 feet in from School House Road. The rise has been cleared for the building, creating an open space large enough to have a lawn and let the southern sun into the units' living rooms downstairs, and bedroom upstairs. The kitchens face the driveway, for easy carrying of supplies.

Beyond the cleared area, the land is wooded wetland, rising to upland. There are well defined paths coming from Chuck Varney's and wending over to Cottage Road. These woods and the paths will be preserved.

The units both have three bedrooms upstairs and a living room, dining room and kitchen downstairs. There are also full basements. The building is designed so that the two units are offset to provide more privacy inside and outside. The outside will have spruce green siding. The roof has a traditional 9/12 pitch. The building is built to the State's strict energy standards which will make it easy to heat.

Annual Town Meeting on June 5, 2010 authorized CICA to apply for the funds and to ask the Town for the land. Later in June CICA applied to the State Housing Authority for a predevelopment loan that would provide money for the planning, surveying and engineering needed to develop a proposal. In November we made a preliminary proposal to MSHA laying out the need for the housing, where it would be located and providing a preliminary budget. The proposed manufactured two-story duplex is less expensive than stick-built housing on the island. It is attractive and very energy efficient. In December, CICA received a "Notice to Proceed" from MSHA, and set to work on the detailed planning.



Meanwhile CICA and the Town worked out a memorandum of understanding over the use of the land on School House Road. It was adopted by the CICA Board and the Town Selectmen in November 2010. The survey of the prop-

erty indicated some issues with its boundaries, and since the parcel is 3.4 acres, these were resolved in favor of the abutters. Then, with MSHA's commitment to the project and the acceptance of the Town/CICA MOU, CICA took a proposal to a special Town Meeting in February 2011 for the Town to convey small parts of the parcel to the abutters and the balance to CICA for the project.

With that approval, CICA chose a bidder, Keiser Homes, for the building and developed and put out requests for bids for the rest of the work. MSHA is a large bureaucracy, used to working with big developers on large projects. But they have been flexible about needs and constraints that are unique to Chebeague and to a small project. They have also been strict about the quality and energy efficiency of the building as well as the need for competitive bidding for all phases of the work. Island companies were chosen for most of the on-island work.

There have been some bumps in the road to completion, mostly related to title issues and the complexity of working with Federal and State requirements relative to the grant. At the outset we had hopes of completion by fall of 2011. The schedule now calls for completion in spring/summer of 2012.

Bob Earnest, President



Sailing photos supplied by CICSS

Chebeague Island Community Sailing School

Summer of 2010; Summer of 2011

The Chebeague Island Community Sailing School (which is sponsored by the Chebeague Island Yacht Club) had a great year in 2010 - 105 budding young sailors braved the chill waters at the Boat Yard for their first-day swim test. And, in 2011 we had 107 students for another fine year. We had good weather, bizarre windstorms, quite a few capsizes, and lots of learning for all.



Once again, we're thankful for the great support from the Boat Yard – the Sailing School students may be the most frequent customers at the Niblic! Thanks to the



Niblic and the Boat Yard for welcoming the kids onto their grounds.

In 2010 the School's combination of on- and off-water instruction, with a healthy dose of games and social activities, continued to draw more kids – and to produce some fine young sailors.

Our instructors in 2010 were Taryn McGovern and Isaac Julien as co-lead instructors, assisted ably by Anna Maine, Asa Julian, and Alec McGovern, and by our junior instructors Persephone Bennett, Nate Richards, and Hutch Hurwitz. In 2011 our co-head instructors were Anna Maine, Asa Julien, and Alec McGovern, ably assisted by Julia Middleton, David Julien, and Trent Lloyd-Rees.



We hope to enjoy such leadership qualities once again in 2012. It promises to be another year of good boat time, instruction, games, and healthy fun for all.

Thanks for sharing your kids!

Bob Earnest

Chebeague Island Council

The Chebeague Island Council was incorporated as a non-profit corporation on October 13, 1945. The original Certificate of Organization states:

“The purposes of the Council are to promote and assist in the development of activities and projects designed to improve conditions important to the inhabitants of Chebeague Island, and to assist, advise, and cooperate with the several duly constituted town authorities in connection with matters pertaining to the affairs of Chebeague Island.”



Yellow Submarine float 2nd place winners



Tiffany Calder, Linda Ewing, Hayat Spencer, Tom Adams

You will be proud to know that in keeping with our original mission, the Chebeague Island Council serves the residents of Chebeague Island in the following ways:

- Funds and manages with Royal River Family Care, the Health Center that sees patients on Chebeague every Tuesday. Royal River Family Care also offers 24 hour on-call medical support.
- Provides fuel to Chebeague families through the Fuel Assistance Fund. This fund supports more than 15 families each year.
- Provides help with the cost of prescription drugs and other medical supplies through the Samaritan Fund.
- Supports the needs of Hospice patients and their families through ‘Cynnies Group’.
- Sponsors the annual Flu Vaccine Clinic
- Sponsors the Annual Health Screening Day
- Sponsors and manages Chedemption which provides funding to all of Chebeague’s non-profits
- Sponsors the 4th of July Parade and road races
- Funds scholarships for swimming lessons at the Rec Center
- Publishes the monthly Chebeague Island Calendar

The Council is a membership organization. Membership dues are \$12 for an individual, \$25 for a Contributing Membership, \$50 for a Supporting

Membership. We also appreciate donations to the Fuel Assistance Fund, and the Samaritan Fund.

Our Founding Board was comprised of Philip A. Seabury (President), Eric P. Kelly (Vice President), Warren F. Hamilton (Treasurer), Elizabeth B. Leonard (Secretary and Clerk), and board members Clifford M. Leonard, Owen D. McLellan, William G. Hill, H. W. Bowen, Waldo P. Crafts, Constantino F. Ciampa, Jan T. Friis, and Ralph E. Small.



Grand Prize winners "the Love Boat"

Our current board is comprised of: Cheryl Stevens (President), Louise Doughty (Vice President), Gail Miller (Treasurer), Linda Kelly (Secretary), and board members Mary Holman, Lisa Israel, Deborah Hall, Ginny Ballard, Mac Passano, John Holt, Donna Colbeth, Linda Carleton, and Ester Knight.



To the left is Betsy Ross surrounded by other members of the Library Float



Ethan Belesca and Risa Fox - fastest boy and girl Fun Run 2011



Molly Hoyt Women's winner 2011 Road Race



Gail Miller awarding Ryland Webb Men's winner 2011

Fire Truck Housing Ceremony - October 9, 2011 - Carole Metz photo



Chebeague Island Fire and Rescue

The Chebeague Fire and Rescue Department this past year was able to purchase a new fire truck. This truck replaced two trucks, one was a 1976, and the other was a 1972. The new truck is a 2011 E- One. The company E- One is based in Florida. The truck was built in Florida, and was moved to their service department in Brunswick for the final inspection and sale. The company has been very good to work with. I would like to thank the members who served on the committee to build the truck. It took many of hours of meeting with sales reps from truck companies, and research, to make this truck work for Chebeague by Doug Ross, Jason Hamilton, Art Lynch, and myself.

The Department has some new members, and I would like to thank them for taking the time to help out in the community. We are always in need of more people who are willing to join the department and help out the community. There is something for everyone to do, be it fire or rescue. Geoff Summa, Lisa Israel, and Jill Hamilton, completed an EMT Basic class and became licensed EMTs. This is a 120 hour class plus ride time on an ambulance. Also Mike Adams, Benjamin Hillicoss, Jade Morlock and Mike Conroy joined the fire department.



Firefighters Amanda Campbell, Joe Ballard, Nancy Earnest, Doug Ross, Benjamin Hillicoss, and Mike Adams

Through a grant, the fire department members were able to have a 60 hour basic fire fighter class that was held on the island. This class was helpful to the

members to get a good basic understanding of what fire fighting is, and the skills it takes to do the job. Through the dedication of these members and all the rest that have so selfishly donated their time to protect the lives and property of the people of Chebeague -Thank you,

Fire and EMS Chief EMA Director and Fire Warden.
Ralph Munroe.

Chief Ralph Munroe

Engine 4

Captain Jason Hamilton
Tom Calder
Jon Rich
Joe Ballard
Virginia Ballard
Mark Dyer
Tad Runge
Lida Munroe
Justin Doughty
Hank Whetham

Engine 8

Lieutenant Doug Ross
John Ash
Donald Buxbaum
Nancy Earnest
Malcolm Rice
John Holt

Engine 9

Lieutenant Art Lynch
Linden Smith

Tank 1

Joe Dyer
David Stevens

Unassigned

Mike Adams
Jon Komlosy
Mike Conroy



Fire Police

Dick Calder
Allen Malony

Explorers

Amanda Campbell
Benjamin Hillicoss
David Hamilton
Jade Morlock

Rescue 2

Captain Jarrod Smith
Lieutenant Beth Putnam
Jill Hamilton
Martha Hamilton
Lisa Israel
Carly Knight
Gretchen Preneta
Rob Prescott
Lori Rich
Geoff Summa
Beth Wiles
Nancy Hill
Jason Hamilton
Ralph Munroe

Base 3

Dianne Calder

Chebeague Island Grange No. 576

We still bear the name, have a small membership and pay our State and National dues but this Grange no longer holds regular meetings. We do, however, make the Grange Hall available for the summer Thrift Shop. Due to the generosity of those people who annually contribute clothing, and household goods, and the dedication of “ the crew” headed by Sara Van Fleet who handle the donations and keep the shop open during the summer months for brisk business, we are able to make significant donations to island non-profit organizations.

The last two years have been especially productive and we have distributed over \$4000 each year to the Church Food Pantry, Fuel Assistance funds, Stephen Ross Scholarship Fund, Island Commons, Island Council, Rec Center and Kid’s Place, Fire Dept., CPA, and Library as well as the Salvation Army, Red Cross and the Bruce Roberts Fund at Christmas. We hope the Thrift Shop will continue to allow us to support these organizations but the building needs paint so some of the proceeds will have to help us get that job done this year.

Many thanks to all who shop at the Thrift Shop. You get some wonderful bargains so please watch for those special sale days!!! Always fun!

Martha Hamilton, Grange Treasurer



Marjorie Munroe and Sarah VanFleet along with the Freeman girls on “all you can wear for a dollar day”



The Chebeague Island Hall Community Center



CIHCC Board members: Ruth Slagle (president), Tad Runge, Susie Savropoulos, Binkie Boxer, Dianne Brewer, Peter Carleton, Beverly Johnson, Mabel Doughty, Martha Hamilton (missing directors: Becky Pellerin, Barbara Hamilton and Pat StCyr



Where do you find Selectmen's Meetings, special Town Meetings, Quilting, Whalers' Concerts, Theater, Readings, Talent Shows, Craft Shows, Yoga, Voting Booths, suppers, brunches and birthday parties? The Hall, of course, and now there is something new: The CIHCC Community Luncheons.

There were monthly luncheons in the past, put on by the Island Commons, but when they decided not to continue, the Board of the CIHCC agreed that this was something we were very interested in doing. With our super new stove and fine dishwasher and a lot of good will, we were ready to roll.

We are lucky to have the talents of Mabel Doughty and Ruth Slagle to get this going and to have the complete cooperation of all Board members who are on the Island during the week. With the help of Arlene Dyer, we came up with ideas for meals and a list of volunteers to help. It was agreed that we would suggest a donation of \$5 to cover expenses and so far, this has worked well. The weather has been sometimes uncooperative but we have managed.



Once a month Community Luncheon

Our newest member, Becky Pellerin, has proven to be most helpful and makes wonderful signs to advertise our lun-

cheons. Husband, Pete, has been working on several projects around the Hall with Peter Carleton and Tad Runge. Binkie Boxer is back on the Board and is a dedicated helper. Among other things she has provided the appropriately colored napkins for each Luncheon. Take note!

Other events included a very successful Raffle at our Christmas Concert with selections from both Island and mainland businesses, for which we are very grateful indeed. It is good to know that our community supports us.



Mimi Moulton, Ruth Slagle, Binkie Boxer and Mabel Doughty

Various repairs included refinishing (and, in some cases, repairing) the old wooden tables. We have also done refinishing work on the front part of the stage. There is ongoing work on organizing the back room and refurbishing the kitchen.

We are a busy group and the Hall is always a busy place. Together with the Library, we hope to start soon on the front steps and ramp. The welcome mat is always out!



Ruth Slagle and Susie Stavropoulos

Susan B. Stavropoulos
Secretary CIHCC



Chebeague Island Historical Society



Laura Hamilton in front of an exhibit where her family roots are on display

The Chebeague Island Historical Society offered to the Island community a familiar array of attractions and historical occasions but with some fresh, new elements. At the Museum of Chebeague History the exhibit on “The Impact of Tourism on Chebeague” was on display, with additional features, for its second summer. Visitors found there the narrative, in pictures and words, of how Chebeague became an attraction for tourists and a second home for “summer native” families, whose descendants still swell and enrich the community in the warmer seasons. The show recounted the growth of ferries and landings, of boarding houses, hotels and summer cottages, and the activities of the summer season over the years. At the center of the story are the people -- Islanders, visitors and seasonal residents -- whose names, pictures and brief biographies appeared on walls and panels in the exhibit room. The sequel to this successful show will be an exhibit in 2012 of artists and their art on our Island: “Chebeague Through Artists’ Eyes.”



Working/lunch exhibit meeting Sylvia Ross, Mimi Moulton, Jane Frizzell, Priscilla Ross, Joan Robinson and Donna Damon

Historical Society Photos



Mimi working on the exhibit

The 2011 program of lectures included both local history and special presentations. In June, at the Annual Meeting, Donna Damon gave us an account of Chebeague and Chebeaguers in the Civil War, as a sesquicentennial remembrance of that national crisis.



Peter Ralston with his spectacular photos

In August, Jim Millinger recounted, with many images, the history of steamboats serving Chebeague. Peter Ralston, of the Island Institute and also proprietor of his own gallery in Rockport, delighted a capacity audience in July with a show of his spectacular photos of the Maine coast and islands. And Tad Runge displayed a range of oriental rugs in September, with stories of his travels and acquisitions. In October Chebeaguers gathered to share ghost stories.

The CIHS House Tour last summer complemented the Museum show with historic cottages, renovated and new summer residences. Thanks to the owners who opened to visitors: the James and Alice Albion Cottage (Michael and Beth Grunko), Juniper Lodge (The Gaskins Family), the Edward J. and Elizabeth M. Duff Cottage (Nancy Cline), David and Gabby Tracy's Cottage, the Edward and Grace Capps Cottage (Rosemary Capps Merchant and Sally Capps Tubbesing), the Edson and Edith Laurie Cottage (David and Alexandra Zaugg Swafford), Olive Lodge (The Martindale Family), and the Berry/Hicks Cottage (Lewis and Mary Holman.)

One of the highlights of the year was the reproduction, with the artist's permission, of Jeanne Mullens' beautiful pastel of the "Old Schoolhouse," the 1870's building which now houses the exhibit room of the Museum of Chebeague History. High quality giclee prints of the pastel and note cards of the image, provided by generous donors, were on sale and one print was raffled off. We celebrated Jeanne Mullen and her artistry at a reception at Stacey and Toby Webb's house on Cottage Road.



*"Old Schoolhouse"
Pastel by Jeanne Mullen*

CIHS finished 2011 in the black, enabling us to deal with maintenance of the Museum of Chebeague History and to establish reserves for future building and capital equipment needs.

To all of our generous supporters, volunteers, visitors and participants in programs, many, many thanks.

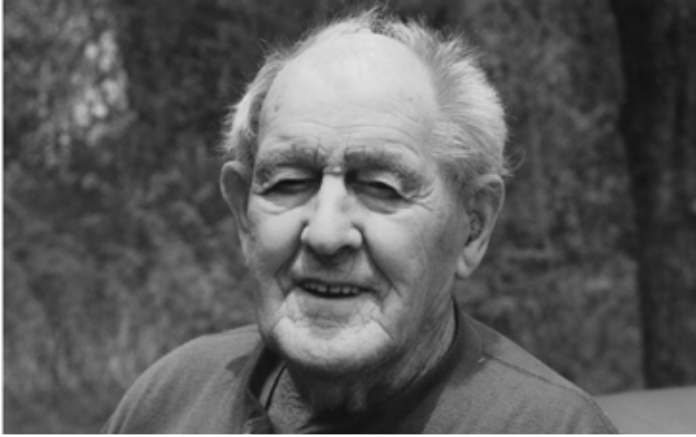
*CIHS Travelers to Jordan March 2011
with their guide and travel planner Suhail Bisharat*



*“The Best of the South West “
A large group of Islanders
traveled with David Tracy as
their guide around Southern
Utah and Northern Arizona in
the Fall of 2011*



Raymond Hamilton
101 years old on December 12, 2011



Ray continues to entertain us all with his stories of past fishing and island life. He reads all the time and when he finds a good book you can see him sitting in his chair into the early morning reading away.

In October, 2011, a representative for Susan Collins came to Chebeague to honor and present Ray Hamilton with a flag flown over the Capitol of the United States in honor of his 100 years.



Donna Damon photo



*Meeting with the
school children
to talk about past
weather*



December 12, 2010

Historical Society photos

Chebeague Island Library 2010



This year was a notable one for the Library for a variety of reasons.

The Library said good bye to Sheila Putnam, who has been a part of the Library for almost two decades. We honor Sheila's sustained efforts to build and strengthen our children's collection, her commitment to the detailed work that is fundamental to a strong Library, and her encyclopedic knowledge of movies. We are especially grateful to Donna Colbeth for stepping in on short notice while we conducted a search for a new permanent part-time employee. And we were very pleased to welcome Will Vaughan to the Library in mid-September and look forward to drawing on his broad experience.



*Library helpers Margaret Leonard and Greta Fleck
Deb Bowman photo*

The Library greeted over 11,000 visitors in 2011. About 3,000 people used the public computers or brought their own and used the high speed Internet connection provided by the Maine School Library Network. Volunteers and staff checked out almost 9000 books and about half that number in videos and audios. Our wonderful volunteer force – 24 strong – augmented the efforts of the Library staff, contributing 277 hours of service toward ensuring that our patrons' wide-ranging requests were served. .

The Library undertook some building and technology upgrades this year. Lighting fixtures, both inside and outside, were replaced to achieve both greater economy of operation and reduced environmental impact. The cost of this project was reduced through rebates from Efficiency Maine. Computers were replaced or upgraded with memory and software to keep us current and efficient. The back steps were replaced with synthetic materials, with the twin goals of extending their useful life and minimizing maintenance costs. Finally,

we have begun to make some improvements to the Library's website to provide greater access to online resources.



Guest speakers Leila and Suhail Bisharat on "Egypt's Spring"

Programming and events were diverse and well attended and enriched by Chebeague residents. Groovy Movie offered up another eclectic mix to an enthusiastic following. Book Group met to discuss a variety of interesting novels. Linda Carleton introduced many of us to the Enneagram. Chebeague poet, Sheila Jordan, read from her Winter Wall. Working with both the Parents Association and Recreation Center, Mad Science came and amazed us all with its "Fire and Ice" show. A talk about mushrooms hosted by Anne Rugh was followed up by a foraging expedition in the area behind the Rec Center.

Chebeague artists and their work continue to dazzle and impress. Susan Stranahan, Michele Tagliati, Janet Conner and Jim Thresher all provided displays of their considerable talents.

The Library remains committed to offering our wonderfully diverse patrons a vibrant and ever-changing array of frontiers to explore.

Deborah A. Bowman, Director



Mushroom foraging with Anne Rugh and Marcia Howell - Anne Rugh photos



Jason Hamilton going to work - Jim Thresher photo

Chebeague Needleworkers

At our Christmas party, Jane Harrington was recognized for her leadership in keeping us organized over the past several years – arranging for the Hall, keeping the books and recruiting people to bring meat, veggies, bread, salad and desert for each evening’s dinner. We struggle along when she’s not here in the winter, but we are grateful for her work.

Though lots of people think of us as “The Quilters”, most of us have covered every bed and wall in our own and our friends’ and relatives’ houses with quilts. So many of us have gone on to other projects – knitting, embroidery, appliqué, making Roman shades or even nightshirts for our husbands. Now we cover most any kind of “handwork”. On the other hand, if you’ve never made a quilt and have always wanted to see if you could, we are glad to help. We even have a sewing machine to lend if you happen to need one.

We meet at the Hall on the second and fourth Tuesdays of each month; once a month in the summer. \$3.00/per session covers expenses. Bring a sandwich for lunch, and let Jane organize what you should bring for dinner. We have pleasant, sociable but productive days, outside the usual swirl of Chebeague committees and meetings.

Beth Howe, Secretary

Chebeague Parents Association

Chebeague Parents Association (CPA) is led by a group of parents who get together regularly to plan fundraisers and organize community gatherings with the primary goal of enhancing the lives of island children.



Althea Dugliss, Vickie Todd and Jen Belesca selling lobster rolls -4th of July

Historically, we've worked closely with the school teachers to help with supplies and to fund special projects. This year we continued this practice by purchasing new tables for both the first – second grade room and the third – fifth grade room and recorders for the new music program. We also continued to fund the Healthy Lunch Program at the school, and we helped to fund the third-fifth grade end of the year field trip to Mt. Washington. We

were excited to match a grant awarded to the school for a greenhouse and will continue to support this valuable educational tool. As we have done in the past, we gave gifts to our graduating seniors and the “graduating” fifth graders. At the end of the school year, we recognized the school's hardworking teachers and staff with small gifts as a token of appreciation for all that they do for our children and for our community.

CPA also works closely with the Rec Center and The Kids Place. This past year, we matched a Recompense grant to The Kids Place to start a preschool program, and we also donated a book to the Library in the name of the new baby born on Chebeague in 2011, as part of our “Books for Babies” program. We also made a donation to the Steven Ross Scholarship Fund as we do every year.



Katherine Rich, Zachary Rich and Carly Rich - Jon Rich photo

CPA is active in planning and facilitating many community gatherings. We particularly enjoy joining forces with the Library to plan fun events at the CIHCC like Pizza & Movie Night, The Community Tree Lighting and Holiday Party where all children receive a special book from Santa. Another annual favorite is the Halloween party. As we

did last year, we put on a “Halloween Harvest Supper” before the kids went out trick-or-treating. So many of our gatherings take place at the Chebeague Island Hall and we are grateful for their support of CPA.

We scaled back our fundraising a bit this year focusing primarily on selling lobster rolls at the 4th of July picnic. We are very grateful to Dropping Springs Lobster Company and to all the lobster catchers in the Bay who donate lobsters to us every year.

Vicki Todd and Althea Dugliss



Cole and Gage Putnam



*Carly Rich and Elizabeth Rugh
Paige Weagle photo*



CRC Children's Triathlon



*Ralph Munroe with his team
Quadathlon winners 2010 and 2011*



Chebeague Recreation Center

In 2011 the Rec served over 700 children, teenagers, and adults with the fitness center, theater productions, swimming pool, Sanford's Pond, and over 30 educational and athletic programs – an impressive statistic given the size of the community. From Lobster Camp to our teen trip to Cow Island for the Rippleffect leadership program and all of the recreational opportunities in between – it has been an impressive year by any benchmark.



*Kelley Rich, Dennis Johnson, and
Theresa Kaufman*

of young people grow up at CRC from taking part in Swim Lessons, Camp Chebeague, and After-School Programs to Teen Center.

Fourteen years ago Chebeague Recreation Center (CRC) was built to provide children, teenagers, adults and seniors with a facility in which they can participate year round in activities specifically designed to fulfill their recreational, educational and social needs and to enhance their skills and enjoyment. We have seen a generation

We have a devoted group of teens, age 13-17, who show up every week to be with their friends in a safe, chemical-free environment. We have adults and teens exercising in the fitness room; the craft room is being utilized by all ages, CIS physical education classes and cooperative games are located in the gym, meetings are being held on almost any night of the week by community organizations, pick-up sports games take place a few nights a week in the gym, we have children 6 months to 12 years old attending day care at The Kids' Place



*Riley Beaupre, Gail Miller, Becca Israel, Laura Hamilton and Tracy Calder
doing crafts at the CRC Holiday Crafts - Caitlin Gerber photo*

five days a week and most recently we have 3 and 4 year olds attending our new preschool program. It is truly a bustling place that can give you a snap shot of the sense of our island community on any given day.

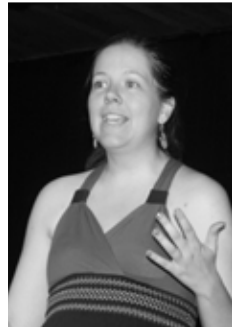
We believe that CRC is instrumental in helping to maintain our year-round community and has a direct impact on the lives of our young people living year round on Chebeague. Kelley Rich, Executive Director of CRC has first hand know-ledge of what it is like to raise a family here. She has been instrumental in providing affordable programs and opportunities that enhance the lives of island children and young families. Collaborating with neighboring Long Island, Cumberland and Yarmouth Recreation Departments, she has organized games and track meets allowing children as young as 5 years old to build relationships with our neighboring towns before they have to leave the island for middle school. We are hoping this effort will help our student's transition to school on the mainland with success.



CRC's Children's Theater Cast of Oliver



Sanford's Pond: Stephen Rich, Laura Hamilton, Tiffany Calder and Caitlin Gerber



Summer of 2011 was Rachel Damon's 14th year directing Summer Theatre



Hayat Spencer and Reuben Olney

We not only offer important community services we are a large employer on Chebeague as well. We currently have five year-round positions and offer over fifteen summer positions that allow working families and young people opportunities for employment on island.

Maintaining the building, running programs, organizing fundraisers all take a great deal of time and effort and we are grateful to our devoted group of staff, volunteers and community members who continue to show up year after year. In an effort to keep our costs down and to professionalize our organization, CRC applied to the competitive Island Institute Fellow Program and succeeded in obtaining the services of Caitlin Gerber! Caitlin started her position in September 2010. She jumped into her role at CRC and our community with energy and motivation. We are lucky to have her on board.

Every year we are amazed and humbled by the level of support given by our friends and families to CRC and by our fellow island non-profits.



Henrietta Leonard Award winner Amanda Campbell with her mother Susan



*Zackary Rich, Henry Hall and Cooper Israel at a Running Meet
Caitlin Gerber photo*



*Great Gatsby Croquet Tournament
Pat Hatler and Howard Coffin
Cathy MacNeill photo*

CRC Volunteer of the Year Awards

- | | |
|------------------------|-----------------------|
| 1998 - Rob Friedlander | 2004 - Glenn Coombs |
| 1999 - Doug Ross | 2005 - Bill Whetham |
| 2000 - Rob Friedlander | 2006 - Carly Knight |
| 2001 - Marcy Pope | 2007 - Carly Knight |
| Nils Wessell | 2008 - Sarah Prescott |
| 2002 - Carol White | 2009 - Ellen Maher |
| 2003 - Bob Libby | 2010 - Joe Ballard |
| 2011 - Dennis Johnson | |



Chebeague Transportation Company

Your transportation company had a very busy year in 2011. We worked to respond to the community's needs/desires expressed in our 2010 customer survey. More than 120 of you took the time and effort to answer the customer survey, and we are grateful. Your thumbs up -- and thumbs down -- on issues such as customer service, fees, barging, and schedules helped us set our priorities and improve our operations.



Your top priority for CTC in 2011 -- and this includes year-round residents, seasonal residents and visitors/renters -- was to reduce costs. Many of you encouraged us to move ahead with becoming a non-profit, or a quasi-public operation, which would make us eligible for grants. Consistency of service was another issue we needed to address. You told us that in several ways. New employee guidelines were created that spelled out customer service requirements. As a result, we have received many positive comments about the customer service levels now being provided by our staff.



CTC Dovekey barge Carol Sebestianski photo

You've also asked us to be better communicators. A number of communication channels have been developed and implemented to help us improve in this area.

We want to share some of our activities and accomplishments of last year.

In 2011, our total revenue was just shy of \$1,000,000. The ferry service transported nearly 120,000 passengers to and from Chebeague last year; 6,500 of

these passengers rode the buses from the Route One satellite lot. 634 vehicles were barged on and off the island from Yarmouth, an increase of 10% over 2010. The Pied Piper contributed to our financial success by adding over \$70,000 in charter and cruise revenue. Over 250 people joined our cruises from the Stone Pier, enjoying music, drinks, snacks, good company and great scenery! In addition, the Piper was used for 5 charters, with some being multi-day. She was actually used a total of 12 days for charters –two originating in Boothbay, one in Rockland, one in Portland, and one from Chebeague.



Pied Piper - Kevin Wentworth photo

In keeping with our goal to keep transportation costs as low as possible, CTC implemented the following changes in our fee structure; 1) increased free passage age for children from their first birthday to sixth birthday,

2) eliminated or reduced several freight charges, 3) added an on-line ticket for those returning to the mainland the same day or next day (the ticket costs for parking fees and ferry fares were reduced by 1/3 in this program) and 4) redesigned barging fees to simplify and, in some cases, reduce costs to the customer.

We were busy making improvements to our service and assets as well. Service improvements included: 1) supplying carts for customers to use in transporting freight, 2) adding a mid-evening ferry trip, 3) purchasing a small bus that provides a more comfortable ride, 4) revising barge reservation procedures to reduce wait time for customers 5) launching a new website with comprehensive information about our service—



*Route One Parking Lot
Carol Sabasteansk photo*

including a “News and Info” page that provides regular service updates, 6) adding the ability to sign up on our website for newsletter and cancellation emails and texts, 7) installing a bulletin board with CTC information on the Islander, 8) repairing the freight shed and adding lighting, a door, and a new window facing the float, 9) designating commuter parking and handicapped parking spaces in the Blanchard lot, 10) adding a pilot program for bi-weekly

shopping bus trips to Falmouth and 11) replacing our 1995 bus with a newer one.

CTC and the Community

In addition to the dozens of free rescue trips we provide annually, your transportation company provides a number of other services for reduced or no fees, including 1) free transportation for funerals, rescues, children and chaperones traveling to community related group activities, companion travel, and travel for people with on-going medical treatment and 2) reduced fares for medical, school, and town personnel travel, and people traveling regularly to visit ill relatives either on Chebeague or the mainland.

Our Plans for 2012

The Board is committed to continuing our progress in 2012. A top priority is to present to our stockholders at the annual meeting our recommendation regarding converting CTC to another type of structure to better position the company to serve our community as efficiently and cost-effectively as possible. We will continue to explore ways to improve service and reduce operational costs. To increase our revenue, we will work to use the Pied Piper as much as possible on charters and cruises.

Thank you for your support of CTC!



Carol Sabasteanski photo

Chedemption



*Teens preparing pallets for shrinkwrapping
boxes of bottles for off island transport
Bob Earnest photo*

I am pleased to report that Chedemption had its most successful year yet. Our total income for 2011 was \$8,095, which means that well over 125,000 bottles and cans were redeemed with your help. After expenses such as insurance and supplies, the Chebeague Island Council was able to distribute \$580 to 13 Island non-profit organizations. Without the help of volunteers, none of this would have been possible.

I am delighted to be leading such an important project on Chebeague. As an avid “recycler” and a committed community member, Chedemption is a place where I can contribute. In addition to the multitude of volunteers, I am also especially grateful to several key people - Dennis Johnson, who acted as my assistant, go to guy and excellent recruiter of eager teens, Bob Earnest, who moves our trailer to Chandler’s Wharf on a moments notice, Catilin Gerber, who also inspires teens to participate regularly, and the Summa family who happily pitch in whatever way I need them. A special thanks goes to all the teens of Chebeague Island who really stepped up and are now an active part of our operation.

As we have moved into 2012, I am pleased to report that Chebeaguers are actively redeeming their bottles and cans. Please promote our mission whenever you can. Not only do the nickels trickle down with benefits to every Chebeaguer in some way, but also Chedemption helps to minimize the waste that enters our landfills. Thank you again for your support, and remember, “REDEEM & RECYCLE”!

Laura Summa

This was our biggest year so far!

Income \$8095.75

Expenses \$ 535.00 Giant plastic bags, and trailer insurance

Balance \$7560.75

Each of the 13 organizations received \$580

We did not pay for any rolls of bags the previous year.

We paid for 3 rolls of bags @ \$20 each in 2011

# of units	31,160	28,120	17,010	210	39,701	15,098
# of bags/boxes	82	74	243	5	772	705
Total \$ 8,095	1,558	1,406	851	32	1,985	2,264
Paid to date \$6,178	beer	soda	small	large	small	large



Mabel and Sanford Doughty, who were the first to save bottles for redemption for Sanford's Pond

Comprehensive Planning Committee



Photo by Krista Hayward taken on her cell phone in July, 2011 of a fast approaching storm

On June 4, 2011, Town Meeting adopted a Comprehensive Plan for the Town of Chebeague Island. It was three and a half years in the making. Adoption of the Plan ends the task of this committee, though others are likely to follow it to develop specific policies that flow from the Plan.

The Town of Chebeague Island came into existence in July 2007. That fall the Selectmen appointed a Comprehensive Planning Committee, and in the late winter a group of about 20 Chebeague residents began work on the plan. They were assisted by Thea Youngs, an Island Institute fellow who did all the mapping, and Hugh Coxe of New England Planning Concepts who helped both with the process and by providing many useful ideas. The Committee met every other week and held seven public meetings on various aspects of the plan. The completed draft was reviewed and approved by the State Planning Office in April 2011, and the ten remaining members of the initial committee took the final plan to Town Meeting.

A comprehensive plan is an effort to lay out how the residents want to see the town develop over the coming ten years. It looks at past trends in such areas as population, age structure, jobs, transportation, education and growth in houses, businesses and not-for-profits. It sets overall goals for the community and develops recommendations that spell



Hays MacArthur photo

out possible ways in which the community can shape the trends that are occurring already so that they meet the goals. A plan is “aspirational”. It does not change any existing Town policies or laws, but it does make recommendations for possible future changes which would need to be worked out by Town com-

mittees and adopted by future Town Meetings.

Legally the Town is required by State law to have a comprehensive plan in order to adopt land use ordinances such as zoning and subdivision review. These are some of the tools that the community can use to shape its development. The Town of Chebeague Island inherited zoning and subdivision ordinances from Cumberland which are more complicated than Chebeague needs and do not necessarily fit the goals which the new Town wants to accomplish. So revision of those ordinances is one of the chief recommendations of the Plan.



The Plan makes about 120 recommendations, grouped under 42 major Town goals. You can pick up a summary of all of these at the Town Office if you want to know more. Many of the recommendations fit under two primary goals:

- Sustaining the existing year-round economy and community, and
- Protecting the Town's waters and rural character.



Chebeague's year-round population is getting older, a trend that is likely to continue as the baby boom generation retires both on the island and to it from "away". Keeping the island's economy vital and supporting the school are critical to keeping and attracting young people to live on the island. They, in turn, keep the year-round community viable. But housing and other living costs such as energy and transportation are expensive, making it difficult for young people to get established on

the island. The Plan makes a number of recommendations related to this set of issues: creating moderately priced, year-round housing, making housing more energy efficient, providing support services for young and old, and working with CTC to explore ways to reduce transportation costs.

The economy of the island is based largely on its rich natural resources. Its waters continue to produce lobsters and attract vacationers. Its beaches, rocky shores, forests and fields are enjoyed by year-round and summer residents alike, and the freshwater aquifer beneath the island sustains all island life.

Over the past 10 to 20 years the island has seen faster development than had occurred since the 1920s. Between 1998 and 2008, 55 houses were built. But people still experience the island as a rural place and want to keep it that way. It is important for future development to tread lightly on the land in order

to protect Chebeague's sole source aquifer that provides our drinking water. Development will not stop, though it may have rapid and slow phases. The Plan suggests ways to shape where future development will occur in order to protect Chebeague's rural character. It also suggests ways to encourage areas for new development that will be compatible with the scale and style of existing buildings.



Quadathlon - Abby Julien photo

It is also critical to maintain the clean waters of Casco Bay that support so much of our economy. The waters of the Bay belong to and are regulated by the State in a variety of ways. But the Town has a role to play in monitoring their water quality and reducing runoff into the Bay. The Town also regulates clamming and moorings. It can play a role in State decisions about granting lease permits to aquaculturists, and could increase its leverage in this process by developing a systematic plan for the use of the Town's waters.

Finally, the Plan considers a variety of more mundane issues related to "running the Town". The Town has begun its life with a substantial burden of debt acquired as the result of secession. It also starts life as an independent Town with infrastructure, such as roads, that are sometimes quite antiquated. This means that it is particularly important for the Town to plan systematically and realistically for future capital investment in things like wharves, roads, fire and rescue vehicles, the transfer station and the cemetery.

The Comprehensive Plan is only a beginning at planning for a sustainable community and a sustainable natural environment for Chebeague's islands and waters. As a small town, Chebeague has only limited capacity to develop and implement major initiatives. But island residents also have a lot of energy and can use it effectively. Now that those who worked hard on the Plan have had a short break, it is time to do the difficult work of carrying out the over-arching goals laid out in the Plan.

The Town of Chebeague Island Comprehensive Planning Committee:
Sam Birkett, Leila Bisharat, Ernie Burgess, Donna Damon, Mabel Doughty,
Bob Earnest, Jane Frizzell, Beth Howe and Peter Olney.

Chebeague Island Planning Board

The work of the Town's Planning Board often reflects the state of the wider economy. When times are good, there are proposals for commercial developments and, occasionally, for subdivisions, that need to be reviewed. When economic times are bad, there are fewer projects to review. So generally over the past several years the Chebeague Planning Board has not been very busy. But there have been exceptions.



The Boat Yard has come to the Board with a series of proposals to implement its modernization of the yard's facilities, and its capacity to generate income. They developed an overall development plan before Chebeague became an independent town, when they built the Post Office/Niblic Gift Shop building. Since then each project has added ad-

ditional work and storage space. The Board reviews site plans for all such commercial development.

The other area that has seen activity over the past year is bluff stabilization along the shore which requires Planning Board review under the Town's Shoreland Zoning. Chebeague's shores naturally erode gradually all the time, and recent strong storms like the Patriots' Day Storm have accentuated this trend. Owners at Hamilton Beach estimate that the bluff above the beach has eroded between 38 and 46 feet since the first houses were built there in 1898.

In the fall of 2010 six of the owners of houses along the bluff brought a proposal to the Planning Board to reduce this gradual erosion by "armoring" the bluff using large stones at the base, with stone-filled "mattresses" above these "toe stones", and, above the mattresses, woven geotextile planted with rugosa roses and bayberry. At the same time, fresh



Hamilton Beach work

water working its way out of the bank will be collected and channeled away so that it does not contribute in the winter to the break-up of the bluff as a result of the cycle of freezing and thawing. This project is an ambitious one. After site walks and considerable discussion at public meetings, the proposal was approved. However it was not carried out until the winter of 2011-2012.

Since such bluff erosion is an issue in a number of areas of Chebeague, the fall of 2011 brought another proposal to the Planning Board for work on the North side of the island.



Finally, with the adoption by Town Meeting of the TOCI Comprehensive Plan in June of 2011, the Planning Board has begun to consider how to proceed with the Plan's recommendations to revise the Zoning and Subdivision Ordinances. So far the meetings have focused on several specific issues that have come up in the process of using the Town's existing ordinances. A more comprehensive review and revision may be begun in the coming year.

Beth Howe
Chairman



Chebeague and Cumberland Land Trust



Snowy Egret at the Hook

Chebeague & Cumberland Land Trust (CCLT) has been extremely active this year in many areas – acquisition, stewardship of existing protected areas, hosting educational and recreational events and completing a rigorous application for national accreditation. We are excited to share some of the highlights of our recent work with you.

This past year, especially the summer months, saw more people enjoying CCLT protected areas on Chebeague Island than ever before. A dedicated group of island stewards monitors the use of the properties to see that they are protected as stipulated in their conservation easements. The stewards also worked with property owners, the Town of Chebeague and other Chebeague non-profits to improve access to the sites and ensure better protection for these unique island habitats.

The Hook at Indian Point became a special focus for improved care as the number of visitors arriving by car and by boat soared. This conservation easement, granted in 1999 by the Indian Island Company, protects an exceptional wildlife and marine habitat for all to enjoy, while keeping the tip with its boathouse for private use. The bird sightings, collated and made available over the web by Tineke Breed and Beverly Johnson, demonstrate how important it is to tread lightly at this area, especially during the migratory season. In collaboration with the Indian Island Company, CCLT has undertaken to improve signage and information about the Hook for more knowledgeable use. In particular,

everyone is urged to “walk if you can, drive if you must” down the short town road to the beach. There is space for only 5 cars at the entrance to the easement. Priority goes to licensed clam diggers when the flats are open. Families with young children or with others who need assistance may want to use the space for dropping off and collecting beach goers. With the Indian Island Company and the Town of Chebeague, CCLT has initiated plans for a designated area on the North Road for visitors to leave cars and bikes so that everyone can enjoy the site more fully and safely this coming summer. See www.ccltmaine.org for more information about Indian Point.



The new Gray Path easement at the East End, granted by the heirs of Bertha and Garland Gray, has opened a special, protected path to the Back Shore from the North Road. This is the first such easement at the East End giving the public protected shore access. Stewards, volunteers and the new property owners, Mike Conroy and Terry Bourke, posted signage and marked out the path leading to the

steps to the beach. Plans are underway for a boardwalk to be constructed this spring over the marshy area, which will allow all to enjoy the path throughout the year. The ten-foot wide path winds between the old stonewall and the vegetable garden. Please stick to the path and respect the owner’s private grounds on either side.

Especially popular this past summer were the CCLT workshops led by Maine Audubon’s Bob Bittenbender on how to identify and attack invasive plants and which native species to promote in their place. These workshops provided Islanders with the knowledge and skills to start addressing some of the invaded areas on the Island. CCLT would like to thank the Chebeague Recreation Center for providing the workshop space.



*Bob Bittenbender from
Maine Audubon*

Just as we work to preserve the natural treasures of Chebeague, we also endeavor to protect threatened properties in Cumberland. CCLT is thrilled to announce a new acquisition there, Meetinghouse Farm, which consists of 48 acres of prime farmland soils and scenic fields on Greely Road. Ayres and C.C. Stockly generously donated the conservation easement to the Trust with the vision of saving the potential for agriculture in our community and preserving scenic open space. The parcel also abuts 50 acres of agricultural land already

protected by the Royal River Conservation Trust in Yarmouth. This is CCLT's first protected farmland in Cumberland and brings our total number of protected acres in both communities to over 670! We are also pleased to be working on some new conservation projects in the coming year on both the island and mainland. They are assets everyone can enjoy.

On a beautiful July afternoon, many Islanders and Cumberland residents showed their support for CCLT at a joint fundraiser on Great Diamond Island with our neighboring trusts, Oceanside Trust of Casco Bay and Falmouth Land Trust. It was a fun and successful event for all! Thank you for coming.

The acclaimed documentary, *Play Again*, inspired the large audience at CCLT's Fall Annual Meeting in Cumberland to encourage our children to take a break from the onslaught of screen time and spend more time outdoors experiencing the real and natural world. CCLT hosted a winter family snowshoe hike March 3rd at the Rines Forest as part of the Great Maine Outdoor Weekend, a statewide coalition of outdoor groups dedicated to helping families spend more time together outside. CCLT will continue to offer fun recreational opportunities on our properties. We also appreciate the efforts of both the Chebeague Recreation Center and the Chebeague Island School to encourage our young island nature enthusiasts to explore CCLT's special island habitats. We hope you will join our efforts by gathering your children and grandchildren together to enjoy CCLT's beautiful protected places.

Leila Bisharat and Penny Asherman



Young students learning about cool creatures at Bennetts Cove with the Island Institute Fellow Caitlin Gerber

Free Concert Fund

In 2010 and 2011 the Free Concert Fund presented three concerts each summer, and may do four in the upcoming, 2012, season. This brings the Fund, which, under IRS regulations, is a “small non-profit” handling less than \$5000 per year, to its maximum potential.



Novel Jazz Septet - Peggy McKenna Photography

In 2010 the Free Concert Fund received donations from 70 generous Chebeaguers and in 2011 the number was 63. This was enough to fund three concerts in the summers of 2010 and 2011, one more than in 2009. As the number of concerts has grown, so has their diversity – classical chamber music, band and popular music and jazz. We may even broaden out to Gospel/Jazz. The same groups return from year to year, and the professional level of the music remains very high.

The July concert each year is by Quintopia: Catriona Shepherd (trumpet) and friends – Michelle Kingston on trumpet also, Yvonne Mumme, French horn, Meg Hausman, trombone and Ernie Sanborn, tuba -- augmented by special guest Barrie Shepherd on the euphonium. In 2010 the concert was preceded by the Ladies Aid Ice Cream Social which put everyone in the mood for 19th century band music. They also play some of the wonderful baroque music for brass instruments as well as popular music of our own time.

The Sebago-Long Lake Chamber Music Festival concerts in August have brought back five familiar musicians – Tim Lees, violin, Phil Palermo, violin, Laurie Kennedy, viola, Bonnie Thron, cello and Mihae Lee, piano -- and one new one – Mauricio Aguiar, violin. In 2010 they focused on the music of Clara and Robert Schumann (this was the 200th anniversary of his birth) with Three Romances for violin and piano by Clara, and the piano quartet in E-Flat Major

by Robert. The program was rounded out with a Quintet for string quartet and clarinet, by the Schumanns' close friend Johannes Brahms. The 2011 concert ranged from a Haydn Piano Trio through a Schubert Piano Trio to a String Quartet by Dimitri Shostakovich. Only the power of Shostakovich's music, written in 1945 and reflecting Russia's tragic experience during the War, could overshadow the sparkling, lyrical beauty of Schubert's Trio

The final concerts, in September of 2010 and August of 2011, were performed by the Novel Jazz Septet – Barney Balch on trombone, Mike Mitchell, trumpet, Bruce Boege, tenor saxophone, Dave Clarke, guitar, Micky Felder on piano and Chebeague's own, Herb Maine on bass. Both concerts showcased the wide range of jazz compositions by Duke Ellington and Billie "Sweet Pea" Strayhorn who joined the Ellington Band in 1939 and wrote the band's signature piece, Take the A Train. In 2011 this was the concert that was preceded by the Ladies Aid ice-cream social, putting everyone in a festive mood. These concerts were, and, will continue to be, a rousing success.

So the organizers of the Free Concert Fund hope that those of you who love having music on Chebeague in the summer will continue to contribute so that everyone will be able to enjoy three free concerts in future years.

Mac Passano and Beth Howe



Henry Hall with his chickens - Bob Earnest photo

Island Commons *A Place to Call Home*



Program of Island Commons Resource Center

It has been a busy couple of years at the Island Commons Resource Center (ICRC) with new hires, new residents, new administration and new ideas leading us through the year. We have been striving to overcome complex challenges affecting our census such as: economic changes imposed on seniors, lower funding from the State and the difficult decision the elderly population and families face when it is determined a move into assisted living is necessary. We are currently enjoying a full house bustling with activity and energy.



Amy Rich and Frankie Doughty



*Children entertaining the residents with their Chinese New Year "Dragon Dance"
Nancy Earnest photo*

Amy Rich has made her mark as an efficient Administrator and dedicated leader. She has been involved with the Commons for several years, starting as the bookkeeper and taking more responsibilities over time, including the jobs of Business Manager and Activities Coordinator. She knows what makes the Commons special and is committed to leading it into the future.

We welcomed some great additions to our staff in the past couple of years. We have two Certified Residential Medication Assistants (CRMA's) from Cliff Island, Marianne Tracy and Faith Rawling.

We were happy to welcome Chebeaguer Meredith Beaupré to the CRMA staff. Darya Johnson has been on board the past year as a Direct Care Attendant (DCA) and we welcome Jillian Thompson as our newest DCA. In addition, Erin Whetham came aboard as our part time shopper and food coordinator. The rest of our dedicated staff has remained with Frankie Doughty as Care Manager, Judy Doughty as a Direct Care Assistant and Polly Wentworth and Linda Stevens as CRMA's. Althea worked tirelessly as our Community Relations Coordinator until turning the position over to Sarah McKinnon in late 2011.



Isabelle Boisvert, Ethan Belesca, Elias Rich and Braeden Rich volunteering at the Commons Cleanup Day

Island Commons recently received its annual survey by the Department of Health and Human Services, the agency that ensures assisted living homes are meeting state regulations for a safe and healthy living environment. We were very pleased to receive a glowing report!

I am happy to report that with a generous grant from the Recompense Foundation, we were able to complete our flooring project during the winter. This project has been underway for two years. We replaced all resident bathroom floors as well as our public bathroom and medical room floor. These renovations make a huge difference to the living environment for our residents. We are very grateful to the Recompense Foundation for their continued



Maryjane Matrazzo, Binkie Boxer and Linda Watkins at the Wine Tasting and Silent Auction



Ann Thaxter, Vicki Marion and Guest artist at the Chebeague Inn

We continue to have a wonderful group of volunteers who regularly provide enriching activities to our residents and support us in many ways. Ruth Slagle and Mimi Moulton are great favorites with their weekly Scrabble games, and Cathy MacNeill frequently hosts crafts along with Linda Carleton, Binkie Boxer, and Sharon Rent. Cindy Chamberlain and Annette Kincaid have been very welcome additions to the group as well.

Ginny Ballard gives countless hours and Ester Knight also donates her time as RN Consultant. Both provide invaluable guidance and expertise, enabling us to provide the best support we can for our residents.



Common's residents are frequently invited to celebrate holiday meals with the school children

Chebeague Island School students from Pre-K to Fifth Grade visited us many times over the past two years. They came to share songs, plays, projects and games. They brighten our day whenever they come and are a great favorite with the residents. We also had a visit from the children on Long Island who performed the Nutcracker for our residents.

We continue to work hard to raise money to support this important island institution. We continue to have great success with our Memorial Day Bake and Plant Sale. We had our most successful Wine Tasting and Silent Auction event yet, hosted once again at the Chebeague Island Inn. We look forward to helping you all clean out your closets with our annual Yard Sale in August. Community members Amy and Marc Demers initiated a new event, a One Mile Swim to benefit the Commons that was held in July. We are always thinking of new and creative ways to fund raise and welcome any new ideas community members like you may have.

The following people have been honored and remembered with a donation to the Commons in the past year:

In honor of: Pommy Hatfield, Chuck Varney, Elaine Clark, Joe Ballard, the Durgins and The Belvins'.



In memory of: Rob Hogan, Anne Galey, Ellen Hamilton, Leah Webber, Robert Brimberg, Charlie Kuntz, Ann Knight, Janet Whitney and Tom Rothschild.

ICRC has an amazing support system that includes our Chebeague community, our generous donors and our valued volunteer network. It is also very important to recognize our Board of Directors. This group of volunteers meets monthly, helps with fundraising events, sits on committees and spends time with the residents. The following people currently sit on our Board: Ann Thaxter, President; Sally Ballard, Vice President; Linda Carleton, Secretary; Lynne Priest, Treasurer; Lew Holman, Esq.; Mary Cushman; Suzy Hurwitz; Susan Stranahan; Lola Armstrong; Joanne Anderson; Allyson Smith; and Ken Pelton.



School children Rohan Boisvert and Zackary Rich playing games with Betty, Charlie and Joan



Nancy Earnest photos

At the heart of all the activities, fundraising and planning going on daily at the Commons, there is staff of caregivers who devote their energy and time doing more than just a job. They cheerfully look after the residents whom they know as friends and family, making sure everyone has what they need whether it is a favorite breakfast treat, help with a puzzle or a walk down memory lane. All of us at the Commons look forward to the next twelve months!

Althea M.R. Dugliss,
Community Relations Coordinator (2011)
Sarah B. McKinnon,
Community Relations Coordinator (2012)



*Sandra and Malcolm Rice
Commons Cleanup Day*

Ladies Aid

The Ladies Aid continues to meet regularly at the Parish House on Thursday for lunch and short business meetings most of the time. We join the Ladies at the Commons for lunch and one of their fabulous desserts sometimes, just to chat and give them a change of faces. We also travel off island twice a year for special occasions: spring break with Nancy and Woody Chamberlin in Brunswick and an “after the Fair“ break in Portland with Judy Graves. Judy orders Amato Italian sandwiches for us and we usually celebrate several birthdays with unusual cakes, always a gala affair. See what you are missing. We are always looking for new members, craft and sewing ideas and we appreciate items donated by non-members. Deb Bowman produces aprons, holders, place mats, and napkins and Sharon Rent is another knitter of those fancy socks that are so popular. Judy Graves makes all our red bows for the over 80 or so Christmas wreaths we produce, some of which travel cross country now. Many thanks to all those who work with us and donate to the cause.

Betsey Ross is the Aid’s goodwill ambassador. She keeps track of who needs a word of cheer or condolences. Last year’s total was 536 cards sent: Get well, Thinking of you, Sympathy, and Thanks for donations. She has sent over 8000 cards since she took over the job. We appreciate donations toward postage to maintain this program. Please let us know if you know someone who needs a word of cheer.

The Aid has sponsored Ice Cream Socials for a couple of summers with the help of Calder’s Clam Shack and the gentlemen who came and dipped ice cream for us. We have decided to give them up however, so there is a fund raiser just waiting for some ambitious group to take over. Over the years the Aid has helped to maintain the Church, Parish Hall and Parsonage and to support non-profit organizations on and off the island as well as the Church mission programs.

Martha Hamilton,
Recording Secretary



Wreath making - Cathy MacNeill photos

Stephen L. Ross Scholarship Fund



Stephen Ross Scholarship Fund assists 1st and 2nd year college students.

The fund was established in 1964 after the tragic death of Stephen Ross, the son of Lewis and Gerry Ross. The principal at the time was \$1400 in 1968 and as the principal grew scholarships were awarded. The principle now invested with the Maine Community Foundation has grown to \$110,515. Over the years many have benefitted from the scholarship.

We are grateful when receiving gifts from repeat donors, some being quite substantial, however any amount given increases the principal enabling us to award larger scholarships. All gifts are acknowledged. Each year some gifts are in memory of loved ones.

Awards were given in 2010 to; Anna Maine, attending Brown University, Joshua Doughty attending Berklee College of Music, and Nate Martin (a second year student) at Saint Josephs College of Maine.

Awards were given in 2011 to Anna Maine (a second year student) at Brown University, Joshua Doughty (a second year student) at Berklee College of Music, Amanda Campbell attending SMCC, Megan Munroe attending SMCC and Arianna Stefanilo attending SMCC.

Our sincere thanks to the folks who are regular yearly contributors of \$500 or more; The Chebeague Island Council (Chedemption), Jim Millinger, Ronald Malony, William McCuskey and the Greater Cincinnati Foundation.

In 2010, besides our regular yearly contributors we were very pleased when the Chebeague Island Grange chose us to receive \$1,000 from their clothing sales at the Grange Hall. Other contributors in 2010 were Mabel and Sanford Doughty, \$600; M.M.Ingram, \$400; Amy Ketcham, \$250; Susan Stavropoulos \$50; Marcelle Wahba, \$50; and Jennifer Ingram.

In 2011 along with our regular yearly contributors we received from James and Mally Cox-Chapman \$1,070; Anonymous, \$500; Jeffrey and Maricel Hahn, \$200; Mabel and Sanford Doughty, \$180; Will and Nancy Sharp, 125; Betsy Ross, \$100; Deborah Bowman, \$50; Ruth



Julia Maine and Jerry Wiles "Name That Tune" fundraiser for the Fund

Bradish, \$50; Natalie Parker, \$50; James Thresher, \$50.

On the next page are the balance sheets for the last two years. Below is a list of all those students who have benefited over the years. On behalf of the Stephen L. Ross Scholarship and the students from Chebeague going off to college, thank you!

Ken Hamilton, President

Committee members are Kenneth Hamilton, Hartley Brewer, Susan Burgess, Dianne Calder, Mabel Doughty, Betsy Ross and Doug Ross.

Recipients of the Stephen Ross Scholarship Educating Chebeaguers since 1968

Michael Hamilton	Kevin Calder	Bradley Putnam
Donna Miller	Jennifer Smith	Bradley Martin
Evelyn Kuntz	Debbie Jones	Viktoria Johnson
David Miller	Christopher Brown	Thomas Damon
Cliff Habig	Adam Heroux	Cooper Bowman
Vicki Hamilton	Anne Porter	Tyler Putnam
Andrew Todd	Pamela Brewer	Jonathan Miller
Milton Calder	Ashley Sidor	Christopher Martin
BJ Abrahamson	Rebecca Jones	Zachary Doughty
Kim Rich	Lynne Parker	Denis Johnson
Robert Weagle	Jennifer Vintinner	Lida Monroe
Dirk Abrahamson	Mimi Lestan	John Summa
Jason Hamilton	Amy Sidor	Danielle Rich
Emery Doughty	Rebecca Towle	Darya Johnson
Karen Dyer	Christopher Towle	Arianna Stefanilo
Robert Lewis	Flora Brown	Anna Maine
Timothy LeSiege	Rob McCollom	Nate Martin
Chris LeSiege	Ryan Ross	Joshua Doughty
Sally Brewer	Brooke Pettit	Amanda Campbell
Rob Parker	Rachel Damon	Megan Munroe
Beth LeSiege	Lauren Miller	

Gifts may be sent to the Maine Community Foundation designated for the Stephen Ross Scholarship at 245 Main Street, Ellsworth, Maine, 04605 or sent to any member of the committee.

Beginning Balance as of:	1/1/2010	\$99,393.04	
Contributions			5,260.00
Investment Activity			
Interest and Dividends			1,119.45
Realized and Unrealized Growth Net of			
Investment and Management Fees			10,883.08
Grant Refunds			1,305.00
Disbursements			
Grants and Scholarships			(3,090.00)
MCF Administration Fees			(1,522.00)
Ending Balance on:	12/31/10		\$113,348.57
Available for Distribution as of	12/31/10		1,895.00
	Grant Budget 2011		3,750.00
	Available for Distribution as of	1/1/2011	\$5,645.00

Beginning Balance as of:	1/1/2011	\$113,348.57	
Contributions			4,460.00
Investment Activity			
Interest and Dividends			1,219.52
Realized and Unrealized Growth Net of			
Investment and Management Fees			(1,858.78)
Fundraising Revenue			709.00
Disbursements			
Grants and Scholarships			(5,645.00)
MCF Administration Fees			(1,718.00)
Ending Balance on:	12/31/11		\$110,515.40
Available for Distribution as of	12/31/11		0.00
	Grant Budget 2012		3,980.00
	Available for Distribution as of	1/1/2012	\$3980.00

Town of Chebeague Island

In 2011, we welcomed Eric Dyer to the Island as our third Town Administrator, replacing Scott Seaver who retired. Not related to the local Dyer family, Eric came to us from the Cranberry Islands, where he served as their operations manager.

The year began with the Board of Selectmen consisting of Donna Damon, Mark Dyer, David Hill, John Martin, and Chris Rich. In June, Herb Maine rejoined the Board, replacing Donna. In November, Mark Dyer resigned and was replaced by Mary Holt in a special town meeting election.



*Peter Rice, Mary Holt and
Peggie Jones*

Chebeague has continued to establish itself as Maine's newest town, with Peaks Island's latest secession attempt failing. And as a new town, we are finding our way to effective self-government. We believe progress has been made on all fronts as we learn how to serve the public efficiently. 2011 saw the repaving of the School House and Stone Wharf roads, reconstruction of the Stone Wharf's barge ramp and the adjacent 7th tee and the initiation of the FEMA (Federal Emergency Management Agency) cleanup of Deer Point and Springettes following a destructive storm. In October, we celebrated the arrival of our new fire truck in a traditional housing ceremony with fathers and sons transferring water from the old truck to the new truck.

Town committees are likewise swinging into action to assist in the management of the Town. Coastal Waters, Shellfish, Aquaculture, Adjustments and Appeals, Cemetery and the Planning Board were all active and diligent in their respective areas, with one highlight of the year being the presentation of the Comprehensive Plan, which will help guide our development well into the future.



We are pleased to say that we have held the line on property taxes while preserving and even expanding services on the Island. This short report outlines the highlights of the year but cannot come close to describing all the activity that goes into preserving Chebeague Island as the wonderful place it is. With the selfless dedication of all those who volunteer to serve the

Island, elected and otherwise, we are confident that we will continue to do so.

David R. Hill, Chairman
Board of Selectmen
Town of Chebeague Island



Photo from Kenneth Hamilton as a reminder of what winters used to be like. Community helping to open up the road in front of Nottebohm's house in the 50's

Recompense Foundation

The Recompense Foundation is a private foundation established in December, 1991 to engage exclusively in activities for charitable and educational purposes within the meaning of Section 501(c)(3) of the Internal Revenue Code for the purposes of devoting and applying the funds of the foundation a) for the maintenance, preservation, conservation and beautification of Chebeague Island, b) for the relief of the poor, needy, distressed and underprivileged residents of Chebeague Island, including providing funds to tax-exempt, charitable organizations which provide food, shelter and clothing, or basic services to such residents, and providing funds to individuals and families living on Chebeague Island who are unable to meet the costs of basic medical, health, nutritional and educational needs, and c) for charitable, religious, scientific, literary or educational purposes. We have continued to support the island organizations that we have supported historically consistent with our new policy of paying attention to the finances of each applicant.

The business affairs of The Recompense Foundation are conducted and managed by its Board of Directors - Glenn S. Kersteen, Executive Director; Eldon C. Mayer, Jr., President; Gail Miller, Vice-President; Manny Morgan, Secretary; Director; Roy Jackson, Director, Manny Morgan, Director, Ralph Munroe, Director, Betts Mayer, Director, John Rich, Director, Jen Belesca, Director.

Grant applications may be submitted by September 1st of the year.



Chebeague Island School

We have been fortunate to maintain all of last year's staff. They provide our students with a consistent, purposeful approach to learning. Kristin Rohrbach Westra (Grades 3-5) continues to provide a varied, challenging curriculum for our students. Tammy Hoidal continues as our K-2 teacher four days per week and Nancy Earnest, our Pre-K teacher, who also works with kindergarten students as well, covers day five. They form an excellent team and ensure a consistent transition for the students. Lee Ann Robinson (3-5) and Marty Trower (K-2) provide the students with expertise as our Ed Techs. This fall we added Penney Wahlstrom as an additional ed tech while Marty was out with a broken ankle, and she now provides additional services three days per week. Louisa Wickard provides instruction in Art, Susan Spalding teaches General Music and Spanish, and Virginia Tatakis-Calder instructs the students in Physical Education and Health in addition to driving them safely to and from school each day. Laura Summa provides us with healthy meals and a clean environment in which to deliver the important function of teaching our students. Althea Dugliss continues as our Administrative Assistant and keeps everyone organized and on task. Denise Sullivan and Patrick Civiello provide Occupational Therapy/Guidance and Speech/Language respectively to many of our students.

And, finally, Cindy Foreman and Mary Holt form a formidable special education team.

Over the last two summers, we were able to complete many projects that made our school a better learning environment. Some of those improvements follow:

- Summer work- Painting main corridor walls; new carpet squares in the k-2 classroom; new floor tile, floor drains raised, wash sta-



“Sun and the Seasons” Eva Neumann, Cole Putnam, Sadie Todd, Catherine Rich, and Aiden Todd - Nancy Earnest photo



2011-2012 Teachers and students collecting sea creatures for their touch tank along with Caitlin Gerber

- tion reattached, and floors leveled in the boys and girls bathrooms.
- New shelving space in the multi purpose classroom.
 - Painted the exterior trim.
 - Painted kitchen cupboards and installed a screen door.
 - Installed a new greenhouse.
 - Completed a wellhead project that protects our water supply.
 - Replaced the air exchange units that were in windows with an air exchange system built in as a part of an energy upgrade provided by a grant for school and town projects.
 - Repairs to portions of the roof over the last two years.

During October, our students in grades 3, 4 and 5 participated in the state required NECAP (New England Common Assessment Program) test. These tests were given in Math and reading to all three grade levels and grade 5 was also tested on a writing prompt. We have recently received the results and our students' scores were awesome. The results have been shared with parents, teachers and the School Committee.



Althea Dugliss photo

Last spring, after nearly two years of intense (at times) investigation and evaluation, the School Committee made the decision to tuition our Middle School and High School students to Yarmouth beginning in 2014/2015 when the



2011-2012 3-5 class: from left to right Jenna Calthorpe, Hannah Birkett, Tiffany Calder, Laura Hamilton, Bea Crosman, Sumner Rugh, Braeden Rich, Cameron Todd, Aaron Belesca and Elias Rich

contract with MSAD 51 expires.

The Committee approved, during the budget process, an early transition plan for 6th grade students beginning in 2011/2012, 6th and 7th grades in 2012/2013, and 6th, 7th, and 8th grades in 2013/2014. Full implementation will take place in 2014/2015. Students still in the MSAD #51 system at that time will have the option of staying in place or transferring to Yarmouth. The School Committee worked diligently on their budget so that there would be no adverse impact on taxes as a result of this early transition proposal. They were successful and we now have four 6th graders attending Yarmouth Middle School and the students report that they were well prepared at Chebeague Island School.

We have nearly one third of the year to go and lots of work to do. We invite you to attend School Committee meetings held on the 1st and 3rd Tuesday of each month at the school at 6:00 PM. March meetings will be focusing on the budget for FY13.

The school community especially appreciates the support of the larger Chebeague Community. We welcome volunteers to come and work with the kids. It is an enlightening experience. We invite you to schedule a time to come in and observe your school, teachers, and students in action. The Community should be proud of their school and the successes of our students at CIS as well as the success of Middle and High School students attending Yarmouth and MSAD 51 schools because they were all well prepared and supported by this special Community. Thank you for your support.

Proudly,
Alton L. Hadley, III (Bump)
Superintendent/Principal



Teachers and students presenting their STORMS project for the Island Institute at the University of Maine in Orono



3-5 Class on the Top of Mt. Washington



“Village People” Caleb Todd, Zackary Rich, Henry Hall, David Calthorpe, Logan Beaupre, Cooper Israel and Riley Beaupre - Nancy Earnest photo



Healthy lunches with Laura Summa is an important part of our school



*Students love harvesting their own vegetables
Nancy Earnest photos*

The Chebeague United Methodist Church



It is hard to believe that I have served the church on Chebeague for 5 years! During that time together I have been privileged to be invited into your lives individually and into your lives together as a community. Our time together has been a gift to me and I pray a gift to you as well.

Your church is a community church that is served by a United Methodist pastor. It is a church of diverse theological views, a church of tolerance, a church of love, a church that is there for every member of the island community - no matter what the need. I pray that you never doubt that. The church is not perfect - if it were we wouldn't need Jesus. But the island church is a community of caring individuals

who try their best to be followers of Jesus.

It is heartwarming to know that members of the community and the church accept the opportunity to help and be helped with food, with oil, with winterization of homes, with meals in times of need. This community comes together often in love when a life is celebrated and grief is overflowing. In the winter folks check in on one another, making sure no one goes without. In the summer, friends and family return to give the island and the church a sense of newness with activity

and laughter, concerts and plays, and gatherings galore. The church is integral to life on the island and is a safe haven where the love of God offers comfort, healing and wholeness.



*Linda Brewster
Cathy MacNeill photo*

The trustees of the church continue to work hard to provide safe, accessible buildings for island use. Our capital campaign raised enough money to renovate the Parish House, to rewire and relight the inside of the sanctuary, to increase the insulation in

the sanctuary among other things. We thank God for each of you who helped to make this possible. The church is always open and often a place of respite for someone passing by. It also provides space for concerts, meetings, parties, dinners and other events.

The church continues to support local missions including the Samaritan Fund, the Commons, the Health Center, Second Wind Farm, the Food Pantry, and the Pastor's Discretionary Fund. We also have supported missions such as Long Creek Youth Developmental Center, Camp Mechuwana, UMCOR, UNICEF, and the Preble Street Resource Center. We made flood relief buckets which helped families in Vermont clean up from the floods last spring. Thanks to the many people who have contributed to make these ongoing ministries of the church possible.

In January, 8 members of this island (winter and summer) traveled to Guatemala as part of a mission team to serve at a mission Salud Y Paz. It was an amazing transformative experience for many. We loved and were loved by the people we found living in the mountain villages. They live in utter poverty (usually \$1.00 per day was the income for a family), but the love of Jesus that flows from their hearts provides joy and hope and peace that give them the assurance of better things to come. We hope you have had the opportunity to hear about the experience and pray that your heart will be opened to consider participating in a future mission to Guatemala. Clean water for a family of 10 for two years - \$100; Pig to feed a family - \$75.00; Sponsor a child's education (including uniforms, books, and meals) \$450.00 for one year; 9 day mission trip to serve \$1500.00; the knowledge that people love them enough to make a difference - priceless.

As the pastor of the church, I have been blessed by my time here. I can't express enough my gratitude for the love and support you have shown me. God is with you in all things. When you reach out to a neighbor, when you love someone in a far off land, you are the hands and feet of Christ in a hurting world offering hope for the hopeless, food for the hungry, shelter for the homeless, comfort for the sick and grieving, and love for all people you encounter. Thanks be to God for each of you.

Grace and Peace,
Linda Brewster
Pastor, Chebeague United
Methodist Church



Sewing for Guatemala- Deb Bowman, Mabel Doughty, Cathy MacNeill, Joan Robinson, Karen Corson, Donna Damon, Lola Armstrong, Kathy Gray



John Howard

Whalers

The Whalers' 2010 Spring Concert featured soloists and chorus pieces from well known musicals and was titled "Spotlight On Broadway". It was fun to do and evidently the audience liked it well enough to attend a repeat performance in late summer.

Outstanding were Peter Carleton's solo "We've Got Trouble" from "The Music Man," Cooper Bowman's solo "Bring Him Home" from "Les Miz" and "For Good" the duet by Jamie Calthorpe and Cheryl Stevens. Vail Traina and Mary Holt gave memorable costumed performances from "Camelot" and "A Connecticut Yankee" respectively... and the whole cast dressed up for a number from "Oklahoma."

The Christmas Concert theme was "A Time of Wonder," looking at the holidays from a child's point of view. Carols, lullabies, prayers and general holiday tunes ranged from the sublime to the ridiculous, and were challenging for us as well as entertaining.

The Spring 2011 Concert entitled "Songs of the Sea" included new as well as old Whaler favorites from Stan Rogers, Chuck Berry, Lennon and McCarthy and the "Casco Bay Song." We could not seem to settle on a date for a repeat concert in late summer but we did man a booth selling coffee at the Fourth of July picnic in 2010 & 2011 and we sang there. Since we buy most of our sheet music the extra income helped our treasury.



Sally Tubbesing

John Howard opted to bow out as Director and join us to sing tenor for the Christmas 2011 Concert. Peter Carleton was able to step in for John and

we were pleased to have a new member join us as Mike Conroy sang bass with John Ash. The concert was entitled "Through the Years" and included notes about the pieces we sang and when we sang them originally with Deborah Gordon as our Director and founder. Peter did a lot of research to pull it all together and we also



Tiffany Calder photo

had a new and challenging piece “Twas the Night Before Christmas,” a Fred Waring arrangement which was quite a production, just ask Sally Tubbesing about the reams of sheet music she had to handle! Peter also brought his children’s choir from church to join us for a number, future Whalers we hope.



Tiffany Calder photo

If you like to sing, please come join us for rehearsals Monday nights at the Hall 7-9 p.m. We’ll find the right notes for you.

Many thanks go to Claire Ross who joined us with her flute for both the Christmas Concerts 2010 and 2011. Herb Maine slapped that bass in the spring concert. Judy Doughty and crew ably dispensed refreshments between acts, David and Cheryl Stevens set up lights and “mikes.” Many thanks also to members who do the advertising, printing programs, stage decoration and above all appreciation to our intrepid pianist Sally Tubbesing.

Participating in one concert or another were:

Sopranos: Jamie Mansfield, Linda Carleton, Martha Hamilton, Mary Holt, Cathy MacNeill, Sheila Putnam, Sue Sawyer, Vail Traina, Susie Stavropoulos.

Altos: Sally Ballard, Cheryl Hillicoss, Tina Runge, Cheryl Stevens (Mimi Moulton on leave)

Tenors: Ruth Houghton, Cooper Bowman, John Howard, Joan Robinson

Basses: John Ash, Mike Conroy, Peter Carleton, Doug Clark

Children’s choir at Christmas: Logan Beaubre, Riley Beaubre, Tiffany Calder, Laura Hamilton, Caleb Todd, Cameron Todd

Concert managers: Linda Carleton and Cathy MacNeill

Tickets: Dianne Calder



Peter Carleton



Cathy MacNeill photo

Great Chebeague Golf Course



The Board of Directors and members of the Great Chebeague Golf Club are proud of the many significant improvements made to the golf course and the clubhouse during 2011. The clubhouse, an island landmark, received extensive and badly-needed repairs to its infrastructure. This work will be completed in 2012 when the chimney is restored and new flooring is installed in a portion of the first floor. The club is grateful to Doug Clark and the other members of the House Committee and to Doug Higgins, who was the lead contractor for this project. The clubhouse work was made possible by a highly successful capital fund-raising campaign conducted during 2010.

Most important among several improvements to the course were an erosion abatement project near the second green and expansion of the pond that borders the second fairway. The bank project was needed to keep the creek from undercutting the second green. The pond is the source for irrigating the greens and tee boxes, so expanding its capacity will make more water available during dry weather. In addition, the pond serves as a fire pond, so the expansion



will also benefit the Town fire department. We are thankful to the Town of Chebeague, which shared in the cost of the pond expansion, and to Wayne Dyer and Bo Beaupre, who did the excavating. Wink Houghton, our Greens Committee chair, and Cary Espeaignette, our Greens Superintendent, oversaw both projects. Thanks to Cary and Wink the course is in its best shape since the memory of man (and woman) runneth not the contrary.

Each year the club hosts more than 20 tournaments, starting with the season-opening Independence Day Swatfest and continuing through the Columbus weekend Blanchard Invitational and Frost Tournament. In between, dozens of members participate in the Club Championships, the Handicap Championships, the several Scotch Twosome tournaments and the Scrambles held in conjunction with the Family Barbecue and the Lobster Bake. Growing in popularity since its inception four years ago is the Member-Guest Tournament, which is

now held annually in late July.

Among the champions during the 2011 season were Jim Van Fleet, Men's Club Champion (Spalding Cup); Linda Grant, Women's Club Champion (Brown Cup); Courtney Maskell, Junior Champion (Driscoll Cup); John Rent, Men's Handicap (Zaugg Cup); and Annette Kincaid, Women's Handicap (McCall Cup). Warren Bogle oversaw men's tournament play; Jean Knowlton and Sue Bogle coordinated the women's competitions.

The Family Barbecue and Lobster Bake highlight the club's social calendar. Jim and Anne Gallagher put on a great barbecue in 2011. Eldon and Betts Mayer provided inspired leadership and managerial skills to the successful Lobster Bake. Both couples had lots and lots of volunteer help from throughout the membership.

Jackie Cross and the Women's Committee deserve special commendation for their many contributions to the vibrancy of the golf club. Barbara Hamilton ably continued in her role as Clubhouse manager. Binky Boxer, Lynne Priest, and Linda Watkins, who have assisted Barbara in the clubhouse over the past few years, have decided they would rather spend more time on the golf course and have elected not to return for 2012.

For over 90 years, the Great Chebeague Golf Club has been an integral aspect of island life. From May to October, from early morning to sundown, you'll find summer residents, year-rounders, families, juniors, friends, guests and day-trippers filling the course, timing their shots over Wharf Road and marveling at the views. We are very loyal to our beautiful course and hope you'll join us during 2012 to find out why.

Linda Grant, President



A "drift" of Snow Buntings on the Golf Course

Great Chebeague Tennis Club

The warm, sunny weather during the summers of '10 and '11 made for great tennis. The courts were busy regularly on Monday and Thursday mornings with men's and women's scrambles.

As in the past, there were several tournaments and two Round Robin events in July and August organized by Dave Hinchman. These events were scheduled in the calendar and posted on the board at the courts. Molly and David O'Donnell retained their grip on the Perkins, Lessing and Harper Cups Mixed Doubles both years! The various Round Robins held in 2010 and 2011 were very well attended.

Thanks to John Wilson, VP for maintenance and Julia and Lilly Middleton, our court keepers, the courts were in fine shape both seasons in spite of the occasional over-enthusiasm of the sprinkler system. Each year we plan to make modest but necessary improvements to sustain the excellence of the courts and surroundings. The nets and lines and the rotting wood gate have been replaced, and there are plans for additional lilies and hydrangeas to soften the exterior southwest corner.

GCTC continued to sponsor tennis camp at the Rec. Center under Ursula King's direction, with the help of daughters Julia and Lilly and Member volunteers. Julia in 2010 and Lily in 2011 also ran Junior Clinics two times a week at noon for an hour, which is a great way for children to get started playing tennis.

We encourage the community to get the word around that we are looking to welcome new members. Contact me or any board director, and we will get the ball in play!

Carol Springer, President
David Hinchman,
Vice President (Events)
John Wilson,
Vice President
(Court Maintenance)
Ursula King, Treasurer
Jeffrey Hahn, Secretary



A rare visit from a harp seal resting on the ice beside the Stone Pier



Cathy MacNeill photo

Casco Bay Lines

Casco Bay lines continued to provide daily service to Chebeague Island with freight and passenger service to the State Wharf at Chandler Cove during 2010 and 2011.

Notable developments for the Bay Lines during this period included

- Continuing to build financial strength through a multiyear plan to retire accumulated debt, thereby reducing the amount of seasonal borrowing and reducing interest costs.
- Completing plans for a new boat to be financed 100% with Federal stimulus funds. The boat will be an evolution of the Aucocisco II, which entered service in 2005. Design improvements for passenger convenience and freight handling based on experience with the Aucocisco have been incorporated in the new boat design. Blount Marine of Bristol Rhode Island will build the boat with delivery currently projected for 2013. In June 2011, after soliciting suggestions from students at Casco Bay Island schools, the name Wabanaki was selected for the new boat.
- Installing Wi-Fi hotspots at the Portland Terminal and aboard the vessels, Maquoit, Aucocisco II and Machigonne for the convenience of passengers.
- Beginning planning for renovations to the Portland terminal, built in 1988. Since then annual ridership has almost doubled to roughly 1 million passengers per year and freight has increased by a similar amount.
- Installing an electronic ticketing kiosk and testing bar code reading of tickets.
- Providing special ferry runs to support the Chebeague Island Inn and its related restaurant at Diamond Cove.

The Casco Bay Line continue to adapt their services to support the six Casco Bay Islands that it is chartered to serve as the island communities evolve and change.

Erno Bonebakker

Chebeague Island Yacht Club – 2011 Season

The 2011 yachting summer provided wonderful boating and social opportunities for CIYC members and Chebeague Island Community Sailing School students. Many thanks to Paul Belesca for his continued support of the Sailing School, to all who contributed time and food for student functions, and to Manny Morgan, who graciously hosted our wildly successful July Meeting (approximately 50 members attended!).

Chebeague Island Community Sailing School



The 2011 Sailing School and fleet, managed under the generously watchful eye of Bob Earnest, had another exceptional summer with over 100 students participating in three sessions. A US Sailing Instructor Certification Course is required of Head Instructors. Abby and Aaron Julien kindly orchestrated that the four day course be held on the Island early this last summer. Students from other parts of the state participated along with Anna Maine, Asa Julien and Alec McGovern (our co-lead instructors).

The 2012 Chebeague Island Community Sailing School will have three sessions: July 9-20, July 23-8/3, August 6-17. We also offer a longer program for students who want more time on the water and at school. Boating and sailing skills are essential for those who spend so much

time on such wonderful waters as Casco Bay! Please visit our link for information:

<http://www.chebeague.org/cicss.html>

The Sailing School fleet is aging, and donations to the school, as well as numerous volunteer hours, help keep replacement costs down. Continued Thank-yous to those who donate their time to Chedemption (~\$600 to the CICSS), Bob Earnest and Danny Todd for helping with centerboard replacements, the Gwillim family for the donation of their O'Day Osprey, and the Hoyt Charitable Foundation and Manny Morgan for a generous donation that purchased a much needed storage trailer.

Power Lunches and Power Nights

Manny Morgan stepped in for Dave O'Donnell in organizing some enjoyable Power Boat outings this last summer. She will be scheduling events this coming summer and hopes to see a greater participation of members and power-boats. Please check our CIYC information, racing calendar and schedule for

2012 online at www.chebeague.org.

Sailboat Race Results and Trophies

Liz Hubbell Riggs and Alexandra Zaugg Swafford became Co-Commodores last summer, succeeding Jim Cox-Chapman, who had served ably as Commodore for four years. The Club is soliciting nominations for open officer positions in the Club and welcomes suggestions for reviving old traditions or establishing new ones.

2011

Trophies:

Club Champion	Bob Earnest
Small Boat Champion	David Feinberg
Large Boat Champion	Bob Earnest
Bungle Award	Stuart Pomeroy

Race Results:

Hamilton Beach Race	Bob Earnest
Ocean Race	Asa Julien
West End	David Burgess
Round Island Race	David Feinberg (small boats) Bob Earnest (large boats)
Picnic Race (Bates)	David Burgess

2010

Trophies:

Club Champion	Bob Earnest
Small Boat Champion	Alec McGovern
Large Boat Champion	Bob Earnest
Bungle Award	Jim Cox-Chapman

Race Results:

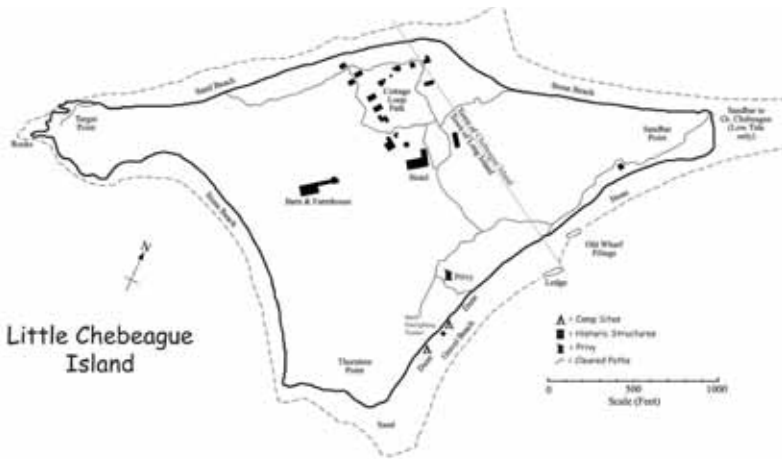
Hamilton Beach Race	Alec McGovern
Round Island Race	Dave Burgess
Ocean Race	Bob Earnest

Many thanks to all those who organized outings, manned the committee boat, and participated in races. Club members hope to increase the number of boats racing in the coming season through the availability of CICSS students as crew. Teaching someone to be comfortable and competent on the water is a lifetime gift that members can pass on to the younger people on the island.

Elizabeth Hubbell Riggs & Alexandra Zaugg Swafford – Co-Commodores



Sailing School photos



Little Chebeague Stewardship Project

Stewardship of Little Chebeague Island got a major boost starting the summer of 2010 thanks to a \$20,000 Recreational Trails Program grant from the Maine Department of Conservation to the Maine Island Trail Association. MITA hired Erno Bonebakker to manage the project. During 2010 the project reopened old trails and built new trails to link points of interest, mowed old fields that were becoming overgrown with shrubs and invasive oriental bittersweet and cut bittersweet out of trees. Interpretive signage was revised and renewed. This will provide additional activities for visitors who for the last few years had been effectively limited to the shoreline of the island

MITA, Oceanside Conservation Trust and Chebeague and Cumberland Land Trust, Portland North Land Trust Collaborative, Rippleffect and others interested in the island recently focused attention on the state owned island, which is split between the towns of Long Island and Chebeague Island. It is a popular destination for boaters, clammers and campers. In February 2009, Portland North and MITA convened a stakeholders' meeting to further discuss the island.

A dedicated volunteer, Richard Innes had cleared trails, erected interpretive signs and researched the history of the island from the early 1990's until 2006, when he "retired" at the age of 82. Since then, MITA and others had struggled to keep up with vegetation which was closing trails, invading old fields and burdening trees. Interpretive signs had become illegible and overgrown.

MITA has worked in partnership with Rippleffect: the Cow Island based outdoor learning organization, who committed their Cow Island Conservation Corps and Youth Leadership Summit students to assist clearing vegetation during 2010. Portland Trails and Maine Audubon also provided generous techni-

cal advice on equipment selection and maintenance techniques.

In late 2010 and early 2011 with additional funding from the Maine Humanities Council, Casco Bay Island Development Association, the Maine Historical Society and other generous donors, the project expanded to develop additional interpretive material, gateway information kiosks and additional, improved signage on the island.

During the 2011 field season, much was accomplished, with the help of many additional volunteers from the Chebeague and Cumberland Land Trust, Portland Yacht Club, Southern Maine Sea Kayaking Network, North Yarmouth Academy, Ocean Approved and Unity College, as well as individual volunteers, most notably Stuart Wood of Harpswell. Additional trails were opened, much more bittersweet was cut from trees, old fruit trees were pruned, a new entry with steps built out of driftwood timbers was built at the sandbar entrance and significant areas of thickets were cleared thanks to John Eastman of Cape Elizabeth, who volunteered to bring his tractor to the island and Plante Associates who provided transportation for the tractor to and from the island. Posts for 2 kiosks were installed and a boardwalk was constructed below the privy.

The largely overgrown areas of today were open fields as recently as 1945. The island was farmed from the early 1800s until the mid 1900s. In the late 19th century the island had a resort hotel which hosted parties of hundreds of people. A summer cottage colony lasted until 1943 when the US Navy took over the island as a recreation and training site for the crews of ships anchored in Casco Bay- including ball fields, a boxing ring and a skeet range. Hundreds of sailors at a time enjoyed lobster dinners before sailing off to escort convoys across the Atlantic. The steel structure on the southeast beach was used to train sailors in shipboard firefighting. The island was abandoned after WWII. It was acquired by the state in 1972 for recreational purposes.

Although the island is now largely wild, very little has been unaffected by human activity. There are many imported and invasive trees and plants, most prominently Oriental Bittersweet vines and Japanese Barberry. Wild flowers are abundant. The island supports animal life including deer, small mammals and reptiles, raptors, songbirds, gulls, and shorebirds.

This project is a new beginning for the stewardship of Little Chebeague. The project not only plans to refresh the island's trails, open spaces and signage but also, working with other groups interested in the island, develop and implement a practical, long term management program to maintain the trails, fields and signs. This will ensure that visitors can continue to enjoy the interior of this wild island, learn about its history and environment well into the future.
Erno Bonebakker

Chebeague Census and Vital Records

(July 2010 through December of 2011)

A quick census of Chebeague was done in January, 2011; there were 333 people on the island at that time. In January, 2012 there were 326 people.

WEDDINGS ...

Nicole Taft and Adam Johnson

John Emery and Elyse Goldstein

Christopher LeSiege and Heidi Sloan

Kristine Marsh and Josh Donovan

Thomas Damon and Iva Allen

Cynthia (Cindy) Cross and Edward Gormley

Joan Brenton and Joe McLaughlin

Rebecca Houghton and Peter Pellerin

Lehan Wilson and Lauren Schug

Steve Harris and John Howard

Andrew Todd and Mary Taylor

Rob Parker and Candy Limon

Brook Pettit and Evan Nicholas

Rob McCullom and Catherine Bruch

Jessica Stevens and Adam Wallace

Brad Martin and Anna O'Neil

Edward Baxter to Jennifer Winther

BIRTHS and ADOPTIONS ...

Adelaide Miyoko Mailloux to Amanda Garcia and Roxanne Mailloux

Owen Michael Oderda to John and Katie Oderda

Eva Raelyn MacLean to Rebecca (Towle) and Michael MacLean

Nancy Tollen Martindale to Brian and Brianne Martindale

Jackson John Williams to James and Laura Williams

Anna Grace Johnson to Christine and Eric Johnson

Emily Elizabeth Klorer to Peter and Lindsay (Crapser) Klorer

Rocco Benjamin Johnson to Benjamin and Courtney Johnson

Gardiner Dennis Jubinville to Kimberly (Bogle) and Seth Jubinville

Lucas Edward Khodadoust to Susan Hiniker and Michael Khodadoust

Eve Marie Smith to Brad and Peg Smith

Henry Lawrence Willett to TJ and Elizabeth Lawrence Willett

Adriana Grunko to Zachary and Amina Grunko

Autumn Gayle Fogarty & Brielle Marie Fogarty to April and Nick Fogarty

Paden Robert Bunch to Jennifer and Bryan Bunch

Mia Rae Martindale to Marci and Scott Martindale

Elisa Mary Runge to Jennifer and Nathaniel Runge

James Malcolm Mulligan to Betsy and Jake Mulligan

Juliette Adeline Pellerin to Peter and Becky Pellerin

Theodore Talbot Layng to Andrew and Caitlin Layng

Elsie-Alaire Tompkins Hamilton to Melissa Hamilton and Seth Tompkins

Camryn Elaine Allen to Carol and John Allen

Finnegan James Martin to Brad and Anna Martin

Chase Edward LeSiege to Christopher and Heidi LeSiege

Alyssa Grace Gomez to Ruthie and Germain Gomez

Noah Christian Johnson to Chris and Christine Johnson

Adison Elizabeth to Christina and Scott Varney

DEATHS ...

Loretta L. (Hamilton) Parker	Norma Louise Drew Tripp
Dodge Morgan	Helen Allison
Rob Hogan	Dana Jolene Gwillim
Anne K. Galey	Jeffrey LeClair
Harold L. White	Stewart S. Townsend
Richard "Dick" Peterson	Rodney Hamilton
Lavinia Ethel Burns	Virginia "Ginger" Sharpe
Barbara Dodd Anderson	Alice Bowman
Phyllis Mildred Moynihan	Kenneth M. Dyer
Wilbur "Spike" Meredith	Joan Rogers Moynihan
Eleanor Bronson	Rosalyn F. Barrett Weagle
Louis Franklin Leonard	Lyman Haskel
Carlton L. Morse Jr	Ann Knight
Martha Evans McLean	Charles Kuntz
William Ross "Bill" Gowen	Alice Merrill
Douglas (Doug) F. Symonds	Evelyn Krauss Hodge
William Clark LaGanke	Thomas Talbott "Tally" Bond
Elizabeth (Betty) Beehler Collins	Donald A. Blanchard
William Allan Calthorpe	Janet Gwillim Whitney
Earnest F. Todd	Harold Emerson
	George William Wilson

CONDOLENCES ...

Lesley Clark --death of her mother Virginia Tacey
Tink Lessing -- death of her brother Nathan Dyer O'Neil
Joan Robinson -- death of her cousin Stanley Taylor Bennett II
John Martin -- death of his father Stephen A. Martin
Susan Stavropoulos -- death of her sister Patricia Breed de Koven
Elise Webb -- death of her brother George Turrell
Dick Collins -- death of his brother James A. Collins
Tina Jordan -- death of her brother Richard Stanford
Ann Trower -- death of her mother
David Mudgett -- death of his mother

Town of Chebeague Boards and Committees 2011 - 2012

Board of Selectmen

John Martin
Christopher Rich
Mary Holt
Herb Maine
David Hill, Chairman

School Committee

Ken Pelton
Beverly Johnson
Jerry Wiles
Carol White
Jennifer Belesca, Chairman

Aquaculture Committee

Bob Earnest
David Whiston
Carol White, Chairman

Coastal Waters Commission

Ken Hamilton
George (Cap) Leonard
Michael Porter
David Stevens
Kevin Wentworth, Chairman

Shellfish Conservation Committee

James Ross
Cecil Amos Doughty
Bob Earnest
David Miller, Chairman
Gary Ross
Alternate: Mac Passano

Board of Adjustments and Appeals

Milo Matrazzo
Peter Rice
David Stevens, Chairman
John Wilson
Tad Runge

Ordinance Review Committee

Herb Maine
Mary Holt
John Wilson, Chairman

Planning Board

Louis Doughty
Sandra Birkett
Ernie Burgess
Mabel Doughty
Jane Frizzell
Charles Hall
Beth Howe, Chairman

Road Plan Committee

Beth Howe
Mark Dyer
Wayne Dyer
Malcolm Rice, Chairman

Cemetery Commission

Joan Robinson
Martha Hamilton
Sylvia Ross
Gail Miller
Beth Howe, Chairman
ex-officio: Diane & Dick Calder
Susan Campbell

Capital Planning and Finance Committee

Aaron Rugh
Ann Thaxter
John Wilson

Comprehensive Planning Committee:

Sam Birkett
Leila Bisharat
Ernie Burgess
Donna Damon
Mabel Doughty
Bob Earnest
Jane Frizzell
Beth Howe
Peter Olney.

Town Departments and Employees

Website: www.townofchebeagueisland.org

Town Administrator 846-3148

Eric Dyer - TownAdmin@chebeague.net

Superintendent of School 846-4162

Alton (Bump) Hadley alton.hadley@chebeague.k12.me.us

Clerk/Tax collector 846-3148 fax 846-6413

Susan Campbell - SusanCampbell@chebeague.net

Office Assistant 846-3148 Peggie Jones

Public Services - 846-6419

David Campbell, Tom Calder, Bill StCyr

Harbormaster, Shellfish Warden,

Code Enforcement Officer 846-3148 Ron Tozier

Tax Assessor 846-3148 Robert Konczal

Fire and Rescue

Lisa Israel, Office manager

Ralph Munroe, Fire Chief

Jarrold Smith, Rescue Chief

Transfer Station 846-6416 Gail Jenkins

Health Officer 846-4962 Anita Anderson

Animal Control Officer 846-3215 Pam Pulsifer



<http://www.chebeague.org>

This Chebeague website is updated daily with the happenings of Chebeague Island and is maintained by Beverly Johnson. Since its design and beginning in 1996 the website has included important community events and celebrations.

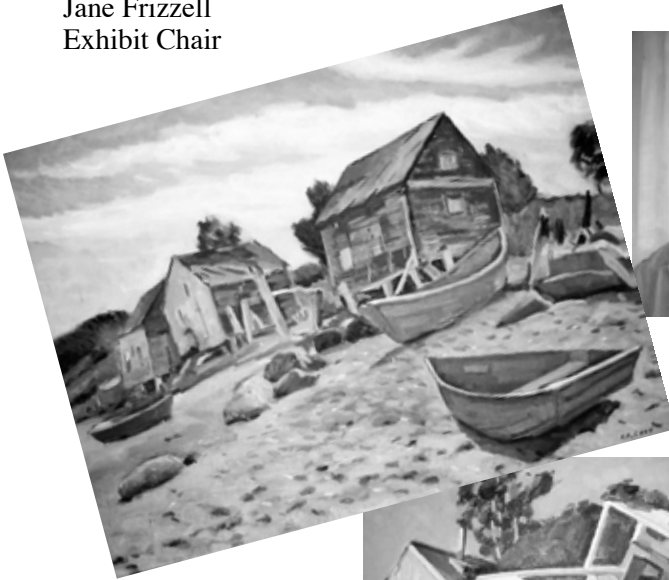
Beverly welcomes and encourages Chebeague related organizations and businesses along with individuals to contribute to the website blog and informational links.

Chebeague Through Artist's Eyes

The 2012 Historical Society Exhibit

The CIHS Exhibit Committee and the CIHS Board are working on and looking forward to putting up a great art exhibit at the Museum this summer. We have obtained permission from many island painting owners to let us borrow and display their precious works of art. We have chosen some 25 artists from the past, both amateur and professional, for inclusion in our show. It is entitled "Chebeague Through Artists' Eyes." We hope to see you all here many times.

Jane Frizzell
Exhibit Chair



One of the featured artists in our exhibit is Howard Coon, shown above in his self portrait along with a couple of his paintings.



Photos of Howard's work supplied by his family